



# DETROIT POLICE DEPARTMENT

*Wm.  
G. Stoepel*





RAY GIRARDIN, *Commissioner of Police*

**“ . . . preserving the public peace and order, apprehending offenders, protecting the rights of persons and property, and enforcing the ordinances of the city and the laws of the state.”**

**This is our job . . . it is important . . . and we feel that we do it well.**

**RAY GIRARDIN**

**Law and Order...Backbone of Civilization**





The average Detroiter has a deep respect for the traditions of his city's police department, and high regard for the abilities of its men and women.

Training of a Detroit Police Officer is as modern, complete and exacting as administrators can provide.

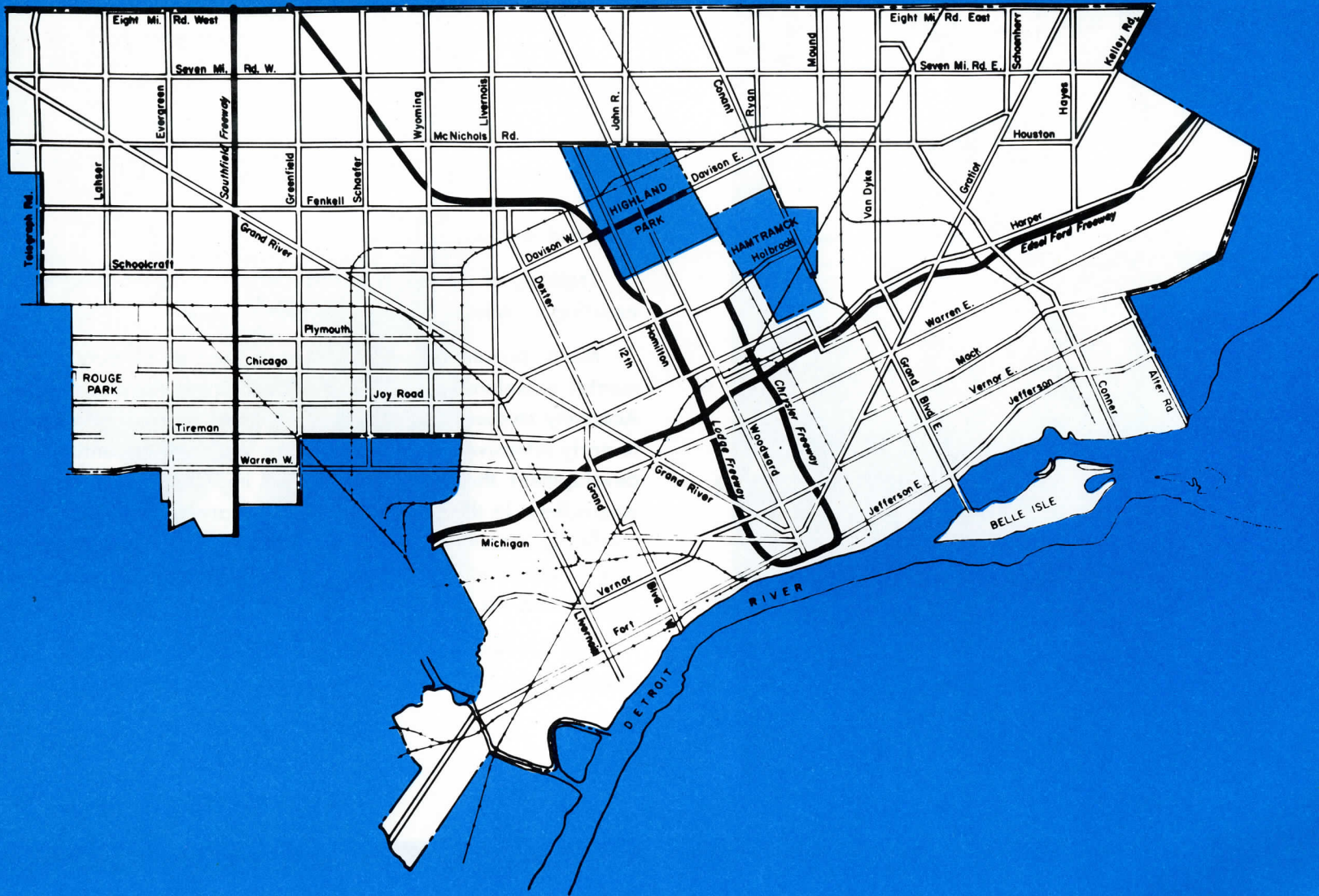
Merit, proven by performance in the line of duty and in departmental examinations, is the basis for promotions, once the student's Academy studies are completed. Special courses, adding new details to early intensive schooling, keep the program of continuous personnel development through education an important part of departmental upgrading. In the entire course of his career, the Detroit police officer "selflessly" serves his city on the streets, or in detection, supervision and administration. His irregular hours can create hardships for himself and his family.

This dedication is frequently greeted with silent but sincere appreciation.





# THE CHALLENGE



140 SQUARE MILES





## *some of the activities*

Detroit, the metropolis . . . 140 square miles . . . 11 miles of harborline . . . 1,620,000 people . . . and thousands of violations of the law. This is the challenge.

Detroit, the metropolis . . . 743,437 scout car runs . . . 95,457 crime complaints investigated . . . 1,080,487 violations of driving, equipment or parking laws acted upon . . . 25,807 other ordinance violations handled . . . Goodfellows football game sponsored . . . Old Newsboys program for needy children aided . . . \$29,266 donated to the United Foundation. This is the reply.

The Police Department also issues licenses for a wide variety of commercial occupations, inspects cabarets, taverns and bars . . . reviews periodicals and motion pictures . . . examines applicants for drivers' licenses . . . processes arrest, lost property and accident reports . . . all requiring the Department's investment of thousands of man-hours to serve Detroiters.

Administrative planning, emergency readiness, protective assignments and many temporary "special" assignments require efforts and activities which are seldom seen or noted outside the Department.

**TRAFFIC**

**INSPECTION**

**REVIEW**

**EXAMINATION**

**HARBORMASTER**

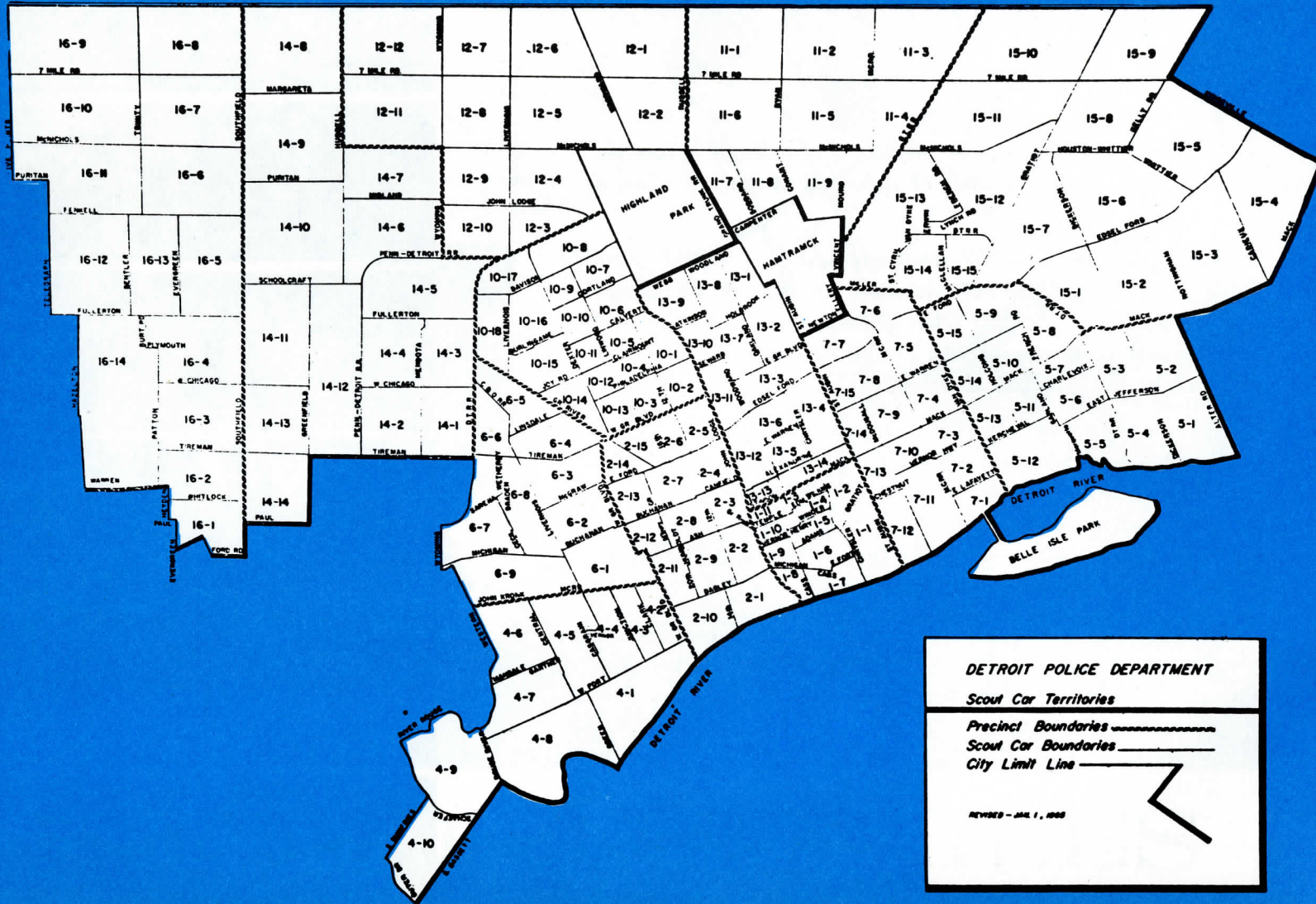
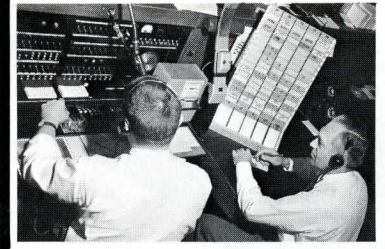
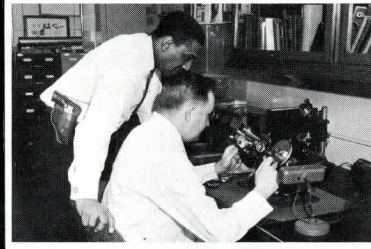
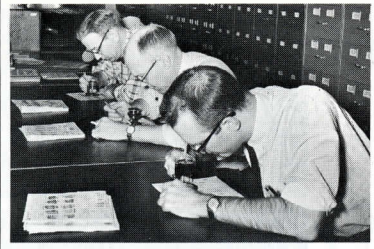
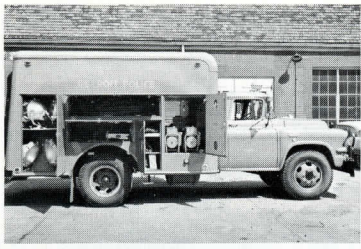
**ACCIDENT REPORTS**

**LOST PROPERTY**

**SPECIAL ACTIVITIES**



# ARRAYED TO MEET THE CHALLENGE







The Detroit Police Department is composed principally of career officers; with cadets in apprenticeship; and civilian employees in clerical and technical positions.

At the end of December, 1964, the career officer strength of the department totalled 4,422 — 80 members below the budgetary authorization of 4,502 officers. Recruiting of high-quality young men and women to fill normal vacancies has become one of the most pressing administrative problems.

The force is supplemented by 61 young police cadets, 379 civilian workers, and 215 civilian crossing guards.

Thirteen precinct areas and a Belle Isle Harbormaster's station provide control areas which divide the city into compact districts (detailed in map on facing page). Each precinct area is parceled into scout car territories.

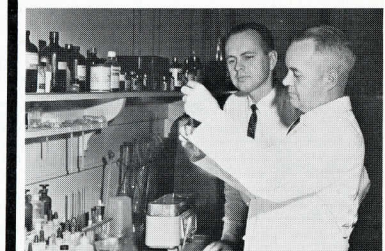
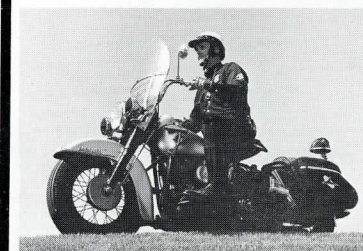
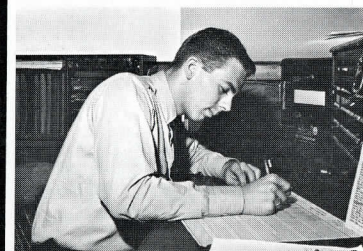
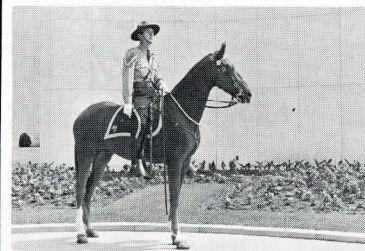
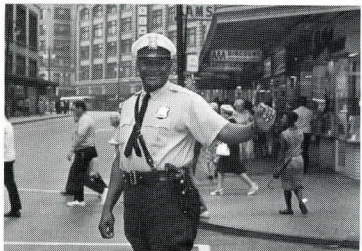
Police work also requires effective manning of sophisticated, modern equipment by responsible officers to bolster the efficiency of each officer's efforts.

To conduct its enforcement program, the Department operates 929 motor vehicles, including 171 motorcycles and 54

three-wheeled cycles, 18 trucks and 7 trailers. There are two-way radio sets in 534 vehicles, and on 4 boats operated by the Department's Harbormaster's Bureau. In 1964, police vehicles traveled 19,364,815 miles in patrolling the streets and freeways, and in replying to runs assigned.

The Detroit Police Department has a leadership record in adopting new techniques. One of the first to use telegraph, telephone, and radio, the Department also was first to put two-way radio cars into patrol service, in 1936.

A most recent innovation is the introduction of a large and sophisticated computer installation within the Department's Technical Services division. Rapidly tabulating needed statistical data, furnishing operational reports more frequently and more completely, the computer is expected to provide accurate forecasting of crime probabilities . . . day and night hours, areas, influence of seasonal factors . . . as memory bank files are built. In early 1964, precinct commanders began receiving daily progress reports on crimes. Before the computer's installation, these reports were hand-tabulated and published monthly.







**TRAINING  
AND  
EQUIPMENT**

**provide  
knowledge  
and  
service**





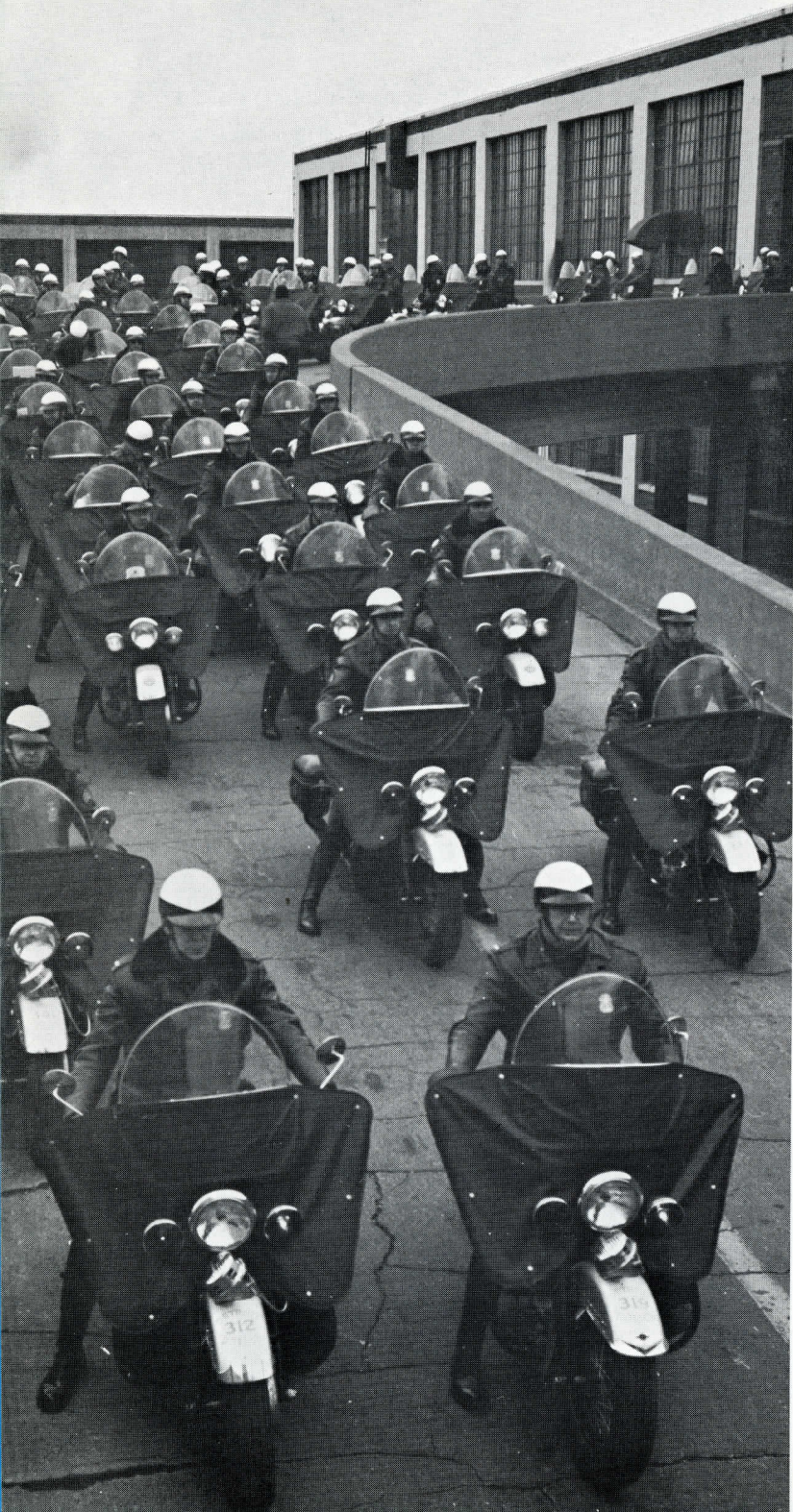
Despite the Detroit Police Department's need for additional men to fill existing positions, high standards of qualifications are maintained. Of the 3,714 applications filed during 1964, only 152 men qualified for appointment to the force — 4 per cent acceptability.

Every appointee as patrolman or policewoman is schooled at Detroit's Police Academy, participating in one of the finest municipal police training programs in America. In eleven weeks of classroom and home study, the student officers learn criminal law, departmental rules, city ordinances, liquor law, the use of weapons, first aid, gymnastics, police techniques, and the humanities. Many other topics included in the Police Academy program prepare each student officer for able service to the city and its people.

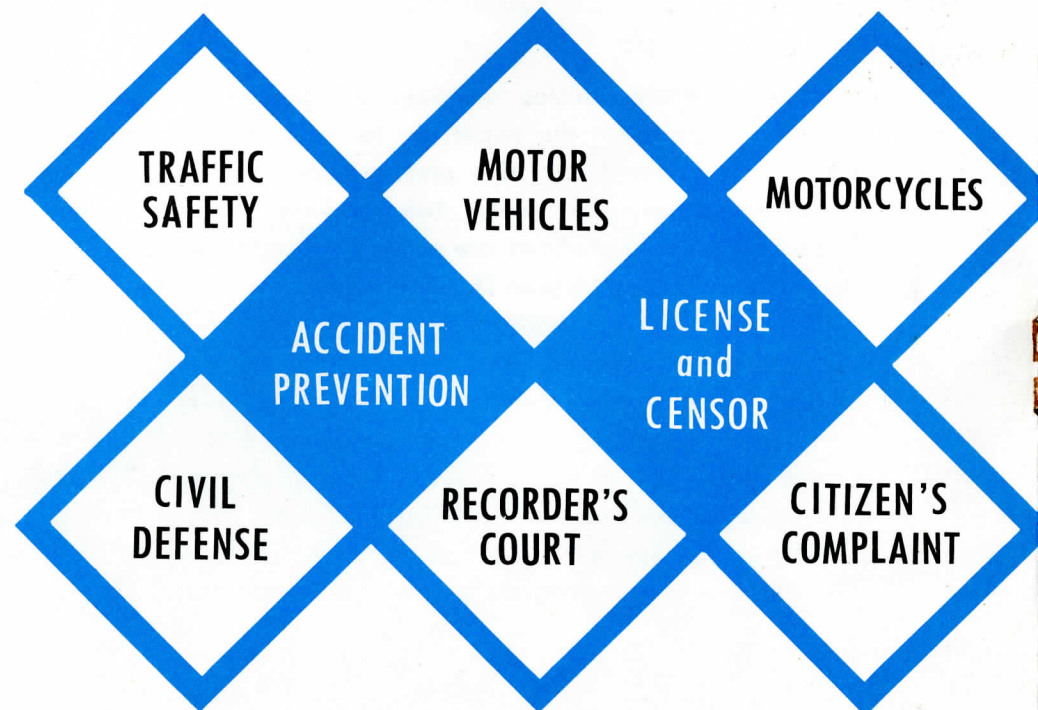
Special motor vehicles, weapons and personal equipment give the Department the capability to meet most emergency situations. Armor-shield suits and armored vehicles are in readiness for any eventuality. Land-and-water operations in swampy ground or shallows are possible with the Department's four-wheel-drive amphibian Duck. Dangerous explosives, from old artillery shell souvenirs to bombs, are transported to open areas in special shock-resistant carriers inside the Department's heavily-walled bomb rescue truck. In the case of an emergency, with normal electrical power being cut off, essential police operations would be coordinated from the Department's self-contained mobile communications trailer. Electronic recording equipment, polygraphs, cameras, mine detectors, and a host of other modern devices can be used to apprehend criminals.







# Uniformed OFFICERS





# defend and protect



A uniformed officer on street patrol, like a marked car in traffic, can be an assuring sight to law-abiding citizens and a deterrent to those with criminal intent. Most of Detroit's police force — 3,932 of 4,422 members — work in the Uniform Division, and 3,512 of these are uniform patrolmen.

The Uniform Division is divided into a number of bureaus, providing a variety of services. Recruiting and Police Academy programs are among their duties. The Mounted Bureau, which supervises crowd activities in parks, parades and other gatherings, also regulates alley traffic in the Central Business District. Among bureaus in the Uniform Division are License and Censor; Liquor License; Vice; Traffic Safety; Accident Prevention; Parking Enforcement; Stationary Traffic, and Operators' License.

Other Uniform bureaus are Radio; Telephone; Signal; Youth; Traffic Court; Recorder's Court; Research and Planning; City Hall; Civil Defense; Citizen's Complaint, and all precinct stations.

A probationary patrolman, just graduated from the Police Academy, is assigned street patrol in a precinct as his first assignment. As his skills develop, he seeks to enter the bureau or specialized assignment most in line with his interests and abilities and achieves this goal as openings become available.

Promotional competition is keen among officers. Examinations and performance records are weighed by the Department's personnel officers, and hundredths of a point may distinguish between positions on the eligible lists.

Merit is the promotional criterion, and this basis, *vigilantly upheld*, has played an important role in keeping the Detroit Police Department vital, dynamic and progressive through its first hundred years.



# specialists get results

The Criminal Investigation Division of the Detroit Police Department works through several specialized bureaus to perform the necessary fact-gathering and evaluation which leads to apprehension of law-breakers.

Homicides, auto thefts, arsons and burglaries are assigned to groups of investigators with years of teamwork experience in their fields. Special Investigation Bureau members handle kidnapping, extortion, bombing and fraud.

All drug offenses are handled by the Narcotics Bureau, embezzlement, larceny by conversion, obtaining money under false pretenses, violation of the blue-sky law and building contractor's act are investigated by the Felony Detail of the



**Criminal Intelligence Bureau  
Research and Planning  
City Hall Bureau  
Disturbing The Peace  
Food and Drug Laws  
Larceny By Conversion  
Motor Traffic Bureau  
Special Investigation Bureau**

Prosecutor's Bureau. This bureau also reviews all assault and battery complaints, disturbances of the peace, malicious destruction of property, indecent and obscene language, and violations of the food and drug laws, school attendance laws and labor laws.

The General Service Bureau of the Criminal Investigation Division is divided into six groups: missing persons; hotel; pick-pocket and confidence; store; bogus check; and warrant-fugitive.

The scientific analysis and identification bureaus provide valuable services to all divisions of the Police Department. Their work serves the community and the Department, as in fingerprint identification of unidentified dead, or in polygraphic clearance of persons detained in suspicious circumstances.

**Auto Recovery Bureau  
Accident Prevention Bureau  
Citizen Complaint Bureau  
General Service Bureau  
Motor Service Bureau  
Telephone-Dispatch Bureau  
Criminal Investigation Division  
Robbery and B&E Bureau  
License and Censor Bureau**

**Kidnapping  
Hotel  
Bogus Checks  
Arsons  
Subversive Detail  
Bombing**

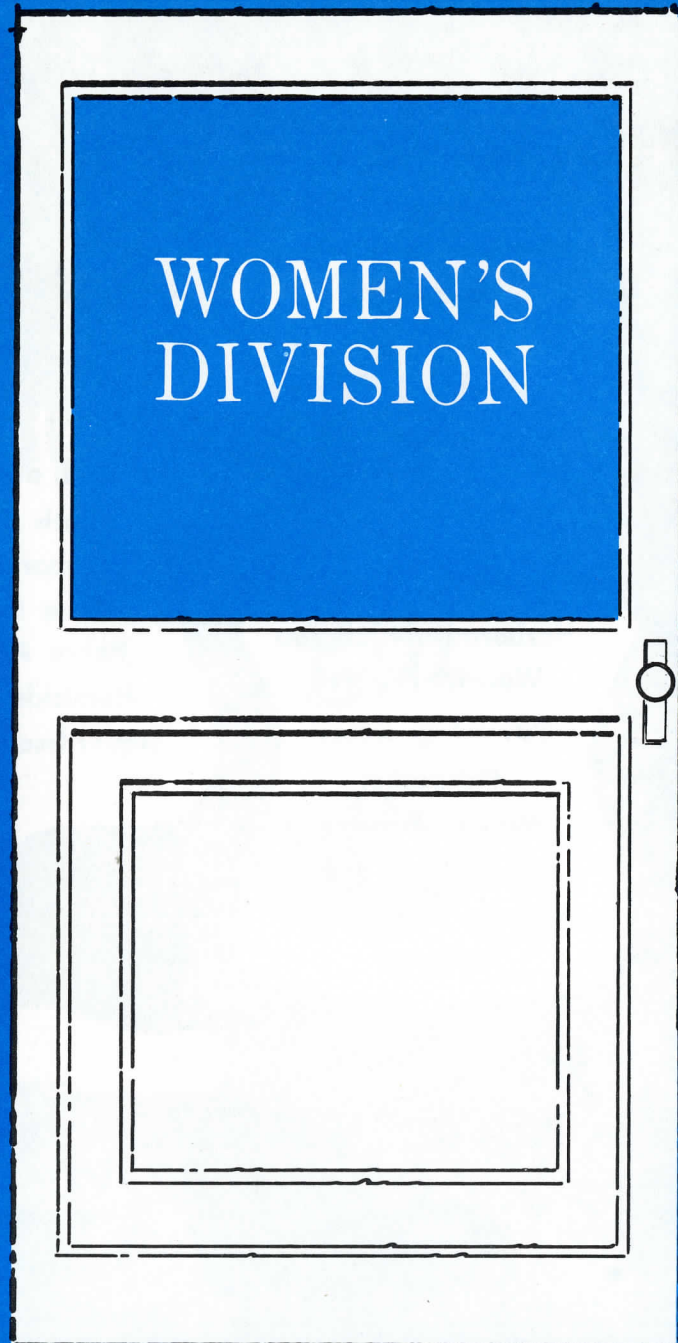
**Harbormaster Bureau  
Warrant-Fugitive  
Pawnshop Detail  
Pickpocket  
Missing Persons  
Central Photo Bureau  
Firearms Registration  
Ballistics**

**Assault and Battery  
Youth Bureau  
Labor Laws  
Vice Bureau  
Police Academy  
Homicide Bureau  
Liquor License Bureau**

**Extortion  
Fraud  
Radio Bureau  
Embezzlement  
Narcotic Bureau  
Identification Bureau  
Prosecutor Bureau**







..... a gentle

The welfare of Detroit's women and children is the main province of Women's Division activities.

The women of this division are confronted daily with many of the city's most serious social and psychological problems.

Abused and neglected young children, victims of sexual offenses and distressed women contemplating suicide are frequently more comfortable and informative in discussing their problems with female police officers.

The normal "beat" for a policewoman is cabarets, transportation terminals, theatres and stores.



## vital hand

Their job is to protect minors, destitute women and girls from being coerced into or voluntarily entering into criminal activities. Runaway girls and boys are interviewed about their home situations, and professional counseling or legal actions are used to correct difficult situations.

Truancies, drunkenness, assaults and other crimes which tend to disrupt families and their members are typical of the range of investigations and prosecutions prepared by the Women's Division.





- 1865** The State of Michigan formed the Metropolitan Police Force and took all police power away from the various marshals, constables and deputy sheriffs. The MPF continued as a State of Michigan function for 27 years.
- 1866** Detective Bureau formed.
- 1871** Patrol Wagon replaced wheelbarrow as method of transporting inebriated persons to the "Lock Up."  
Installed first telegraph signal boxes for communication between patrolmen on their "beat" and headquarters.
- 1873** Police Telegraph System connecting station houses with each other and the City Hall was established. Mounted Patrol was organized for the purpose of patrolling the outskirts of the city.
- 1892** State Legislature empowers Mayor of Detroit to appoint members of Police Commission.
- 1901** Police Commission abolished and Mayor is empowered to appoint a single commissioner.

# A CENTURY OF

- 1922** Police Headquarters built at 1300 Beaubien. This building at the time was the finest, most complete municipal police building in the world.
- 1927** Scientific Laboratory and Ballistics Bureau were added to the Detroit Police Department.
- 1928** Radio receiving sets were installed in eight police "cruisers." These high-powered, seven passenger touring cars constantly patrolled the streets manned by four men. Appointment of a Traffic Engineer for advancing the solution of traffic problems.
- 1929** Police Teletype was added to communications system.
- 1934** A public address system adapted to give safety instructions to pedestrians in the loop shopping area.
- 1936** Detroit joined a chain with nine other cities in an intercity police radio telegraph.
- 1939** Police radiograms able to be sent to every important police department in country. Merit system established for recruiting and promotions.



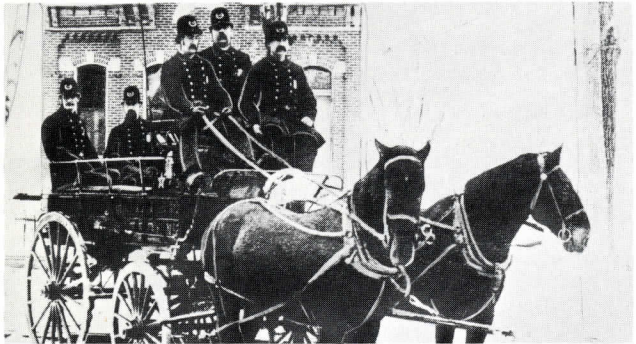
- 1907** The modern fingerprint system was first used by this department.
- 1911** Police Academy established.
- 1909-1913** First Traffic Squad organized for vehicle and bicycle control. "Minute Man" motorcycle squadron was formed. Patrol Wagon ambulance service initiated. First traffic signs installed on Detroit streets.
- 1914** Record Bureau established to compile crime statistics.
- 1916** First traffic light installed in Detroit (developed by a Detroit policeman).
- 1920** Women's Division established.

# TRADITIONS

- 1942** One thousand Special Police Officers for emergency war duty authorized by ordinance. Pedestrian ordinance adopted and enforced.
- 1945** Installation of the drunkometer.
- 1946** The "Crime Prevention Bureau," forerunner to the Youth Bureau, became an integral part of the department.
- 1953** Establishment of the Research and Planning Bureau. Police Cadet Program put into operation whereby 17-20-year old youths would perform nonpolice duties.
- 1956** The acquisition of two armored vehicles for combating barricaded gunmen. Establishment of Master Index Criminal File.
- 1960** The Criminal Information Bureau was established.
- 1961** Detroit became the first city in the nation to adopt the conventional station wagon as a dual-purpose patrol vehicle and ambulance.
- 1964** A large, sophisticated data processing machine was installed in Police Headquarters to tabulate and analyze crime statistics, thus providing a constant flow of information for all areas of police activity.



# Yesterday's Album



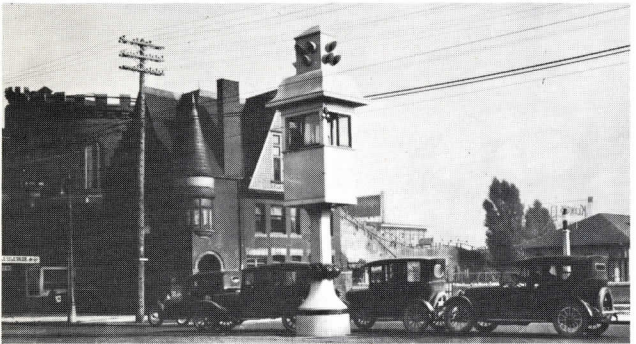
Late 1800's police patrol wagon or "paddy" wagon used to transport prisoners to the lockup



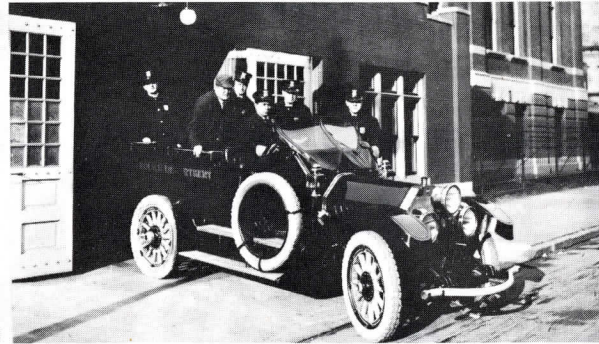
In 1895, nattily dressed police officers — complete with cane — ran an "escort service" across Cadillac Square



Detroit's first police radio broadcasting station was located in the attic of the Belle Isle Station



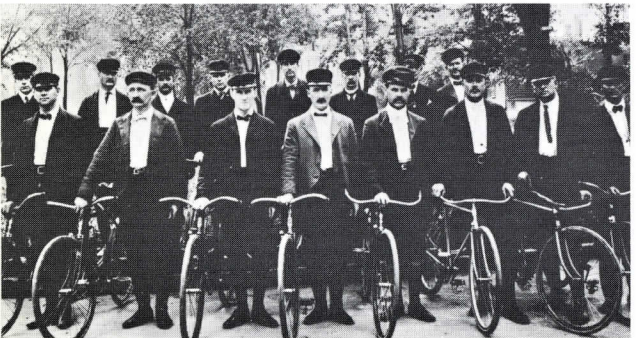
One of the last manned traffic signal towers (1925) . . . East Jefferson and the Belle Isle Bridge



In 1918, major crime calls were answered by the "Flying Squad" or "Detective Bureau Flyer"



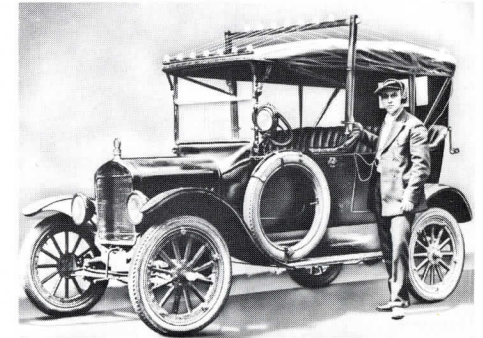
Stray dogs, as well as stray criminals, were police problems in 1916



Speed law violators were easy prey for the "Scorcher Squad" or Bicycle Squad in the early 1900's



This armored car was a familiar sight in raids on the "Black Hand" (Mafia) and rumrunners



The world's first police radio car was a Detroit Police Model "T" Ford with a homemade antenna



RAY GIRARDIN  
EUGENE A. REUTER  
ROBERT A. LOTHIAN  
WILLIAM H. POLKINGHORN  
ROSEMARY H. KLUG  
JAMES M. LUPTON  
WILLIAM E. ICENHOWER  
VINCENT W. PIERSANTE  
JAMES J. DUNLEAVY  
FREDERICK F. WRIGHT

GLENN C. CHITTICK

JOHN J. O'NEILL  
THOMAS TURKALY  
ARTHUR C. SAGE  
PETER R. SONCRANT  
ALBERT G. ISAAC  
ARDEN DeLUCA  
GEORGE BLOOMFIELD  
CARL H. SMITH  
WILLIAM P. DORAN

Commissioner  
First Deputy Commissioner and Superintendent  
Second Deputy Commissioner  
Third Deputy Commissioner and Director of Traffic  
Fourth Deputy Commissioner and Chief of Women's Division  
Deputy Superintendent  
Chief Inspector  
Chief of Detectives  
Deputy Chief of Detectives  
Director of Personnel; Office of Personnel; Personnel Examiner  
Police Academy, Recruiting and Medical Bureaus  
Central District Inspector; Precincts 1, 2, 12 and 13;  
Traffic Court and Recorder's Court Bureaus  
Western District Inspector; Precincts 4, 6, 10, 14 and 16; Youth Bureau  
Eastern District Inspector; Precincts 5, 7, 11 and 15; City Hall and Civil Defense Bureaus  
District Inspector; Special Services Division; Censor, Vice and Liquor License Bureau  
District Inspector; Police Administrative Assistant, Technical Services Division  
District Detective Inspector; Precincts 1, 5, 7, 11, 13 and 15  
District Detective Inspector; Precincts 2, 4, 6, 10, 12, 14 and 16  
District Detective Inspector; Criminal Investigation Division  
Inspector; Administration Details and Assignments, Miscellaneous Complaints  
Police Attorney, Assistant Corporation Counsel

**JEROME P. CAVANAGH, Mayor**

**COMMON COUNCIL**

*Ed. Carey, President*  
Mary V. Beck  
James H. Brickley

Edward Connor  
Thomas L. Poindexter  
Mel Ravitz

Wm. G. Rogell  
Phillip J. Van Antwerp  
Anthony J. Wierzbicki

**CITY CLERK**  
Thomas D. Leadbetter

**CITY TREASURER**  
Chas. N. Williams





# Tuebor

*I Will Protect*

**Detroit  
Police  
Department**

Prepared by DEPARTMENT REPORT AND INFORMATION COMMITTEE

Form C of D-38-BR (Rev. 7-65)